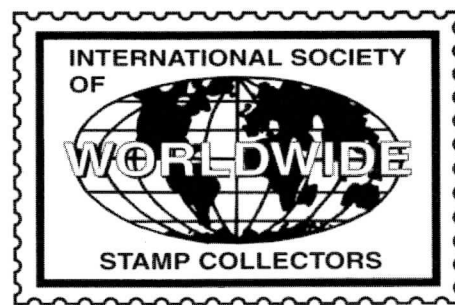


# The Circuit

May/June 2008 • Volume 26 No. 3



Affiliate of APS (#151) & ATA (#89)

[www.iswsc.org](http://www.iswsc.org)

The Official Journal of the International Society of Worldwide Stamp Collectors

## Semi Crazy: Types of Semipostals

by Bob Voss (#2182)

*Editor's Note: This is the second article in a series by Mr. Voss, a retired Lutheran Pastor and an APS part-time stamp dealer, doing business as Lake Edge Stamp Service. His passions beyond stamps include grand parenting, fishing and music.*

A semipostal is a postage stamp that also serves as a receipt for the prepayment of an additional fee, usually to benefit a charity. A semipostal may have a single denomination or, most frequently, a postage denomination and a plus indicator (+) for the portion going to the charity (Figure 1).



Figure 1—San Marino, Scott B39.

In Europe, semipostal stamps are often called charity stamps. However, in the U.S. the designation "charity" stamp is used for charity labels that support private organizations. Charity stamps such as "Easter Seals" and "Christmas Seals" are not semipostal stamps because they are not valid for postage.

One of the reasons I enjoy collecting worldwide semipostals is the variety of semipostal types that are available for collectors. In this article, I would like to focus on the various types of semipostals that have been issued by



Figure 2—Argentina, Scott B176.

postal agencies.

Regular Semipostals are the most common type of semipostal issued. In the *Scott Catalog* they are most



Figure 3—German Democratic Republic, Scott 1117.

commonly listed with the prefix "B" (Figure 2). However, there are exceptions. When a semipostal is also part of a regular commemorative set, it may be lacking the "B" prefix. East Germany is a good

example, where many of the semipostal issues are listed along with the regular postage (Figure 3).

Air Post Semipostals are the second most common type of semipostal stamp category. You will find them listed in the *Scott Catalog* after the regular airmail issues. These stamps are designated by the prefix "CB". One of my all time favorite semipostal sets is the beautifully engraved 1939 French Omnibus issue marking the 150<sup>th</sup> anniversary of the French Revolution which contains several airmail semipostal stamps (Figure 4).



Figure 4—French Equatorial Africa, Scott CB1.

Occupation Semipostals are the third most common type of semipostal. They are listed in the *Scott Catalog* with the prefix "NB". Germany has issued numerous occupation semipostals, with the

Continued on page 8

**ISWSC BOARD OF DIRECTORS****Executive Director:**

Terry Myers (#736)  
9463 Benbrook Blvd. #114  
Benbrook, TX 76126-3235—USA  
TMyers6497@aol.com

**President ('09):**

Joanne Berkowitz (#98)  
125 43rd Street  
Sacramento, CA 95819-2101—USA  
joannebe@pacbell.net

**Secretary ('09):**

John Luong (#808)  
4877 W 129th St  
Hawthorne, CA 90250-5001—USA  
j.luong@gmx.de

**Director of Membership ('09):**

Jeff Schumer (#2101)  
6410 Cloister Gate Drive  
Baltimore, MD 21212-1057—USA  
jschumer@comcast.net

**Director of Public Relations ('09):**

John Seidl (#1646)  
4324 Granby Way  
Marietta, GA 30062-8150—USA  
jseidl@mindspring.com

**Director of Stamp Outreach ('09):**

Richard Rizzo (#2215)  
18300 Winter Park Court  
Gaithersburg, MD 20879-4626—USA  
poly76ce@gmail.com

**Director At-Large ('08):**

Duncan Koller (#2154)  
844 NE 73rd Ave.  
Hillsboro, OR 97124-6989—USA  
duncankoller@comcast.net

**Director At-Large ('08) &****Immediate Past President:**

Randy Smith (#1111)  
PO Box 2085  
Minneapolis, MN 55402-0085—USA  
rasmary4@frontiernet.net

**WEBMASTER**

Rick Simpson (#1703)  
HC 79 Box 52E  
Romney, WV 26757-9509—USA  
rsimpson@141.com

**INTERIM THE CIRCUIT EDITOR**

Randy Smith (#1111)  
PO Box 2085  
Minneapolis, MN 55402-0085—USA  
rasmary4@frontiernet.net

**REGIONAL REPRESENTATIVES****Australasia:**

Noel Routley (#1610)  
Post Box 166  
Koondrook, VIC 3580—AUSTRALIA  
noelroutley@bigpond.com

**British Isles:**

Karen Rose (#584)  
47 Heron Road  
Oldbury, Warley  
West Midlands B68 8AG  
GREAT BRITAIN

**Cuba:**

Cleto Sanchez (#1311)  
PO Box 2222  
Havana, CP-10200—CUBA

**Canada:**

William Silvester (#1058)  
378C Cotlow Road  
Victoria, BC V9C 2G1—CANADA  
wgsilvester@shaw.ca

**Eastern Europe:**

Jan Szpyrka (#539)  
ul. Srebrna 29  
PL-44121 Gliwice—POLAND  
Jan.Szpyrka@polsl.pl

**Scandinavia/Baltics:**

*Vacant*

**Western Europe:**

*Vacant*

Mail or e-mail your questions to the appropriate volunteer. Please include a self-addressed, stamped envelope or an International Reply Coupon.

**ISWSC PROGRAM CONTACTS****SALES CIRCUIT MANAGER**

John Baumert (#1246)  
PO Box 5574  
Bloomington, IN 47407—USA  
jhbaumert@dishmail.net

**OMNI EXCHANGE****Manager:**

David Paul (#59)  
2 Heritage Drive  
Belchertown, MA 01007-9548—USA  
dpaul11@hotmail.com

**Co-Manager:**

Dale E. Harris (#2311)  
212 Schofield Drive  
Reedsport, OR 97467-1366—USA  
harrisda@ohsu.edu

**Co-Manager:**

Roger Kraus (#2462)  
115 Alandale Ave  
Brockton, MA 02301-1770—USA  
roger.kraus@comcast.net

**PREMIUM CIRCUIT MANAGER**

Ken Wills (#2150)  
5308 Shadow Glen Drive  
Grapevine, TX 76051-7350—USA  
wills@airmail.net

**AUCTION MANAGER**

Mike Crump (#2126)  
PO Box 331908  
Atlantic Beach, FL 32233-1908—USA  
desoto1947@yahoo.com

**STAMP ANSWER MAN**

Myron Wambold (#2403)  
E&M Etcetera; PO Box 2563  
Inverness, FL 34451-2563—USA  
myronnw@tampabay.rr.com

**WHATZIT? COORDINATOR**

Richard Barnes (#2425)  
11715 123rd Street NW  
Edmonton AB T5M 0G8—CANADA  
rtbarnes@shaw.ca

**SWAP CIRCUIT****Coordinator & Small/Definitive****Circuit Manager:**

Randy Smith (#1111)  
(see address at left)

**Large I Circuit Manager:**

John McArthur (#768)  
14 NW Stonebrook Drive  
Lawton, OK 73505-9599—USA  
kjojmm@sbcglobal.net

**Large II Circuit Manager:**

John Seidl (#1646)  
4324 Granby Way  
Marietta, GA 30062-8150—USA  
jseidl@mindspring.com

**Super Circuit Manager:**

Bob Armstrong (#1392)  
2209 SW Oak Ridge Rd  
Palm City, FL 34990-2159—USA  
googiepox@adelphia.net

**CTO Circuit Manager:**

William Silvester (#1058)  
378C Cotlow Road  
Victoria, BC V9C 2G1—CANADA  
wgsilvester@shaw.ca

**USA Circuit Manager:**

Larry Veverka (#2363)  
935 University Street  
Walla Walla, WA 99362-2342—USA  
veverka@charter.net

NEXT ISSUE DEADLINE:

May 20, 2008

# A Rare Medical Condition

by Terry Myers (#736)  
Executive Director

It's early spring, so my annual supplement for the Scott International Postage Album has arrived. As a new issues collector, that means I have about 5,000 stamps issued in 2005 waiting to be mounted. That also means 5,000 mounts to be measured and cut – and licked!

I've tried lots of different tools to try to help with the process of wetting the mounts, but somehow I find that only the tip of my tongue actually provides just the right amount of moisture to activate the gum – and yet



not too much such that the mount wicks any liquid between the plastic layers.

I also discovered that the shiny glue that looks so benign on the back of the mounts is actually a little rough to the tongue – especially if you try to do too many at a time.

Some years ago, I decided I was going to get through my supplement in the first week after the pages arrived. To facilitate this, I had actually placed the stamps in dry mounts as they arrived throughout the year from the multitude of philatelic agencies where I maintain subscriptions. So I locked myself in my den and started licking away.

By the second day, my tongue felt a bit raw. But suddenly on the third day, I discovered my entire tongue was involved in a massive superimposed herpetic infection! My tongue was one huge ulcer and I started swabbing it frequently with viscous xylocaine (which we pediatricians used to have around to rub on the gums of teething infants before we decided that the cardiac side effects weren't all that great!) just to be able to swallow!

By the fourth day, I was significantly dehydrated and ended up hooked to an IV pole. Oral herpetic infections typically take a week to heal and mine was no exception.

I'm not sure exactly what to call this entity as "stamp-mount-lickeritis" seems a bit over the top, but I now limit my mounting to a couple of hours a day to avoid a recurrence.

## Dues/Advertising Policy

### Dues Information:

Single/Dealer/Club 1 yr. membership: \$15.00\*

Single/Dealer/Club 2 yr. membership: \$27.00\*

Single/Dealer/Club 3 yr. membership: \$39.00\*

Youth 1 yr. membership (under 18): \$12.00\*

\*Plus 250 large commemoratives for the Youth Program or equivalent donation in U.S. funds.

Dues include six newsletters per year. You may pay for up to three years at a time. For an application or further information, send a SASE or an IRC to:

Terry Myers

ISWSC Executive Director

9463 Benbrook Blvd. #114

Benbrook, TX 76126-3235—USA

TMyers6497@aol.com

### Advertising Policy:

For reasons of accountability, only members of the ISWSC, APS or ASDA may place ads. All ads dealing with philatelic concerns are acceptable. We reserve the right to edit out objectionable language. Advertisers are expected to respond to all inquiries, so be sure you can handle the responses before you offer to trade, buy or sell. If you have a bad result from answering an advertisement, contact the Editor. We will try to resolve the conflict.

### Display Rates (Camera Ready\*) per Insertion:

Full page: \$75.00

Half page: \$40.00

Quarter page: \$20.00

Per column inch: \$5.00

Six repeat insertions of the same ad for the cost of five ads (one free). We also offer a two-sided insertion for \$125.00 per issue.

\*Camera Ready means ready to paste up or scan and print. Reductions and typesetting extra.

### Classified Rates per Insertion:

First 30 words, including name, address and ZIP Code are \$3.00. Additional words are 20 for \$1.00.

NOTE: State abbreviations = one word; "P.O. Box 1234" = two words; ZIP Code = one word.

**Make all checks payable to "ISWSC" in U.S. funds. Send text and payment for ads to The Circuit Editor (see page 2).**

# Auction #31 Opens for Bidding

**A**uction #31 is a mixture of new and previously listed (unsold) lots. My expectation for future auctions is that previously unsold lots that are listed will be discounted on the next go-around, returned to their owner or donated to the ISWSC. Owners will be contacted before any such action is taken. Discounted lots will be identified as such in future auctions. Publication deadline for the next possible auction (July/August *The Circuit*) will be in mid-May. Please submit any new lots before that date. To obtain forms, ask any questions about the auction or to submit bids, please contact:

**Mike Crump**

**P.O. Box 331908**

**Atlantic Beach, FL 32233**

**Phone: (904) 220-2685 (home)**

**(904) 210-3788 (cell)**

**E-mail: desoto1947@yahoo.com**

## AUCTION RULES AND INFORMATION

1. Bid increments: \$1-5 = \$0.25, \$5-10 = \$0.50, \$10-30 = \$1.00, \$30-100 = \$2.00, Over \$100 = \$5.00. Bid in these increments only. Odd amounts will be lowered to the next increment. All bids are in US dollars.
2. High bidder wins at one advance over second-highest bidder.
3. If there are tie bids, the earliest postmark wins.
4. If only one bid is received, lot goes at the minimum bid listed by the owner.
5. State the highest you are willing to pay. Your high bid will be used only if necessary. No "buy" bids or requests for percentage increases will be accepted.
6. Lots are returnable for items misdescribed or misidentified. No returns on large lots or collections, etc.
7. The Auctioneer reserves the right to decline unreasonably low bids.
8. Lot information will be sent to successful bidders with invoice. Invoice will include postage. Payment is expected in U.S. funds within 10 days.
9. Lots will be shipped and billed by Mike Crump and payment should be sent to him at the address on the invoice.

## ISWSC AUCTION #31 BID SHEET ~ Closing June 15, 2008

*PLEASE PRINT CLEARLY OR ATTACH AN ADDRESS LABEL.*

**MEMBER #:** \_\_\_\_\_

**NAME:** \_\_\_\_\_

**ADDRESS:** \_\_\_\_\_

**PHONE:** \_\_\_\_\_

**E-MAIL:** \_\_\_\_\_

LOT #	BID	LOT #	BID	LOT #	BID	LOT #	BID	LOT #	BID

Mail to: ISWSC Auction #31; c/o Mike Crump; PO Box 331908; Atlantic Beach, FL 32233 or e-mail to: desoto1947@yahoo.com



**ISWSC AUCTION #31****Closing June 15, 2008**

<b>Lot #</b>	<b>Description</b>	<b>Minimum Bid</b>
1	USA. #25, U, chipped perfs left side & upper right top, med cancel, CV \$125	27
2	USA. #68a, U, off center, right side perfs, heavy cancel, CV \$65	11
3	USA. #73, U, right side SE, close to touching bottom, CV \$70	17
4	USA. #153, U, nice centering, a bit faded, CV #160	40
5	USA. #163, M, plate block of 6 (imperf), issued NG, VF, LH, CV \$37.50	10
6	USA. #281, M, NG, VG, CV \$35	3.50
7	USA. #293, MNH, F/VF, CV \$230	60
8	USA. #766, 767, MNH, S/S, CV \$48	18
9	USA. #943, 1946 Smithsonian, partial sheet (40), U, on paper, 5 line cancel	6
10	USA. #2975, Civil War pane, MNH, Face \$6.40, CV \$17.50	6.50
11	USA. #C49, full sheet, MNH, plate #25762, A.F. 50 <sup>th</sup> ann.	5
12	USA. #C54, full sheet, M, plate #26391, Balloon Flight	7
13	USA. #RW19, RW35-41, Duck Stamps, 8 signed, U, CV \$85	40
14	USA. #RW22-24, RW36-37, RW39-41, Ducks, 9 signed, U, CV \$110	50
15	USA. #RW25-27, RW31-35, RW37, Ducks, 9 signed, U, CV \$110	50
16	USA. #WS1, Thrift Stamp, .25. perfs touch frame on left, MH, CV \$16	5
17	USA. Se-tenant, 111 sets, U, nice 1912-19, 3198-02, baseball legends, 1498, Impressive accumulation of difficult stamps	20
18	USA. About 10 oz. common defines, much variety, dupes, fun looking for varieties. Value \$5	
19	USA. 300 diff, U, F-VF airs, defines, comems, CV \$50+	12
20	USA. 4 Ret. sales sheets, 93 stamps, mostly U, classics, #11 to JQ3, Retail bal. \$450+	130
21	USA. 53 stamps on APS circuit pages, #88/808, J31, U296, net at \$48	20
22	Andorra, Austria, other A-B. Ret. OMNI book, 98 stamps, U, CV \$59+	5
23	Andorra. 2 Europa sets, #182-83, 196-97, M, F-VF, VLH, CV \$40.75	27
24	Australia, (few Ireland & GB). 192 stamps, 07 CV \$91	16
25	Australia. Ret. sales book, 87 stamps, net priced at \$37 (50% CV)	16
26	New South Wales. #31, U, clear margins, 08 CV \$150	32
27	Austria. #33, U, G, perfs cut into design 2 sides, clr. cancel, CV \$90	20
28	Austria, Bavaria, other A-C. Ret. OMNI book, M & U, 80 stamps, CV \$65	6
29	Belgium. #Q10, MNH, L. corner crease, CV \$72.50	10
30	Belgium (mostly), Bolivia, other A-B. Ret. OMNI book, U, 99 stamps, CV \$108	10
31	Belgium. Ret. OMNI book, M & U, 42 stamps, CV \$46+	4

**Abbreviations:**

&amp; = And

+ = Plus

BKLT = Booklet

BLK = Block

COMEMS = Commemorative

CPL = Complete

CR = Crease

CV = latest Scott Catalog value

DIF = Different

DUPES = duplicates

F = fine, off center, but perfs  
don't touch design

FDC = First Day Cover

G = Good, perfs cut into design

HBO = Held by owner

HC = Heavy cancel

HH = Heavy hinged

HR = Hinge remnant

INCL = Include (s) (ed)

LC = Light cancel

M = Mint

MLH = Mint light hinge

MH = Mint hinged

MNH = Mint never hinged

NG = No gum

RET = Retired, returned

S/S = Souvenir sheet

SE = Straight edge

TH = Thin

U = Used

VF = very fine, wide margins

VG = very good, perfs touch  
design

w/ = with

Lot #	Description	Minimum Bid
32	<b>Brazil.</b> 30+ stamps, M & U, CV \$26	
33	<b>Brazil,</b> France, Germany, others. Ret. OMNI book, 122 stamps, U, CV \$40+	4
34	<b>British Guiana.</b> #75, MH, VF, nice bright clean copy, CV \$70	15
35	<b>Bulgaria.</b> 17 stamps, U, in glassine, CV \$3+	
36	<b>Canada.</b> #66-70, F-VF, MLH, 1897-98 "Maple Leaf", CV \$151	30
37	<b>Canada.</b> #271-272, MLH, F-VF, CV \$67+	25
38	<b>Canada.</b> 106 stamps, M & U, on APS circuit pages, CV \$25	7
39	<b>Central Europe.</b> Remainder collection on Scott Specialty pages to 1950's in Specialty binder. Austria (593 stamps), Hungary (365), Czech (348), others. 1604 total, few dupes, mostly common. CV \$370	30
40	<b>Chad.</b> #205-210, sheets of 8, painting series, (1969), CV \$10	3
41	<b>Chile.</b> #3, U, F, CV \$55	12
42	<b>China,</b> France, others. Ret. OMNI book, 140 stamps, U, CV \$41+	4
43	<b>Curacao.</b> #147-151, MH, VF, complete set, CV \$20.50	6
44	<b>Czech,</b> Bolivia, Brazil, others. Ret. OMNI book, 72 stamps, U, CV \$45+	4
45	<b>Czech.</b> #209, 210, 10 gutter pairs attached, M, nice pieces, CV \$12	5
46	<b>Czech.</b> #213, 214, parts of sheets, M, 31 of each stamp, gutter margin, CV \$15	7
47	<b>Czech.</b> #B144 (30 copies), parts of sheets, M, gutter margin, CV \$13+	6
48	<b>Dahomey</b> (13 stamps), Israel (42), Greenland (12). Ret. OMNI pages, CV \$34+	3
49	<b>Denmark.</b> #25a (Missing "A" in Denmark), MH, F, CV \$45	7
50	<b>Denmark,</b> Japan. Ret. OMNI book, 100+ stamps, U, CV \$86+	8
51	<b>Estonia,</b> Ethiopia, Falklands, others. Ret. OMNI book, 80 stamps, M & U, CV \$49+	4
52	<b>Finland.</b> On hingeless pages (Lighthouse), some on Scott pages, 400+ stamps, mostly U, mostly 1957-81, CV \$133	35
53	<b>France.</b> #300, MLH, VF, clean and fresh, CV 21	6
54	<b>Germany.</b> #669, U, VF, nice clear cancel, CV \$32	7
55	<b>Germany.</b> #693, U, F, CV \$14	2.50
56	<b>Germany.</b> #701, U, VF, CV \$22+	4
57	<b>Berlin.</b> #9N58-60, U, light cancel, F-VF, CV \$31.50	5
58	<b>Germany.</b> 70 stamps (after 1940), APS sales book remainders, net: \$22+	7.50
59	<b>Germany,</b> 2 states. # ret. APS sales books, M & U, CV \$495	100
60	<b>Germany.</b> 2 returned circ. bks, 19 <sup>th</sup> & early 20 <sup>th</sup> cen, 102 stamps, CV \$200+	5
61	<b>Germany.</b> 480 stamps, mostly U, cataloged, incl. 17, 75, 382, 440, also 23 postally U inflation. CV \$140	25
62	<b>Germany.</b> 192 stamps, U, (1990s), APS book, CV 198	29
63	<b>Germany.</b> 159 stamps, U, (1899-2000), few dupes, ret. circuit, CV \$151	20
64	<b>Germany.</b> 122 stamps, U, ret. OMNI book, CV \$58+	5
65	<b>Gibraltar.</b> #2, MH, BG, OG, sm. Cr & some paper adherence; <b>Labuan.</b> #23, MNH, VF, CV \$92+	33
66	<b>GB.</b> #27, U, perfs close at bottom, (312 cancel), CV \$100	37
67	<b>GB.</b> #34, U, perfs touch bottom & r, wide margin on l, cancel 12, CV \$110	30
68	<b>GB.</b> #39, U, short perfs r, top & bottom, LC, CV \$92.50	22
69	<b>GB.</b> #49, U, short bottom perfs, 219 cancel, CV \$52.50	20
70	<b>GB.</b> #59b, U, wide r. margin, HC, (P over 1) plate 11, pale buff, CV \$87.50	25
71	<b>GB.</b> #104, U, F-VF, CV \$200	65
72	<b>GB.</b> #130, U, F-VF, nice cancel, CV \$21	
73	<b>GB.</b> #136, 9p, bulls-eye cancel (CDS) a bit heavy but clear, CV \$55	8.50
74	<b>GB.</b> #210-20, VF, MH, deep rich colors, extra nice, CV \$64	12.50
75	<b>GB.</b> #222, 250, 251A, 271-274, 286-288, 307-312, 324, 326, U, CV \$116+	35
76	<b>GB.</b> 60 stamps, U, 16 Machins, all diff, exchange sheets, CV \$55+	
77	<b>GB.</b> Ret. OMNI book, 136 stamps, U, CV \$55+	5

Lot #	Description	Minimum Bid
78	GB. Ret. OMNI book, Millennium issues, 37 stamps, U, CV \$18+	
79	GB. Ret. OMNI book, 64 stamps, U, CV \$27	
80	GB (UK), Australia, Ireland. 192 stamps, U, in APS book, CV \$92	17
81	GB & US dual franking cut-out block. GB #528, US 1051, CV as singles, \$6, Owner's est. value \$8	
82	GB & Commwlth, Hungary. On returned APS circuit pages, net \$18, (50% CV)	8
83	GB. 6 FDC-Nice cachets: (1) #1887-8, Marriage of Pr. Edward/Sophie (1999); (2) 1944/47, Hopes for the Future (2001); (3) 1948/52, Great Occasions (2001); (4) Stamp Show 2000; (5) 2002-2006, X-mas (2001); (6) New Machins, 6 values, 8-33-40-41-45-65 (2000) CV \$48.75	20
84	GB. Golden Wedding Ann. FDC, addressed, #1781-84, OCV est.\$10	
85	Hawaii. #32, off center, U, HC, CV 30	
86	Hungary. 210 diff stamps, U, LC, ID on stock card to 1965, CV \$40	5
87	Hungary. 215 diff stamps, U, early-1960, F-VF, few dupes, stock card, CV \$35	5
88	Hungary. Airs, C30-3, VF, MH, CV \$40	17.50
89	Iceland. 28 diff U stamps, CV \$60	10
90	Iceland. Used: #11, 16, 47, 74, 99, 100, 101, CV \$41+	4
91	Ireland. Ret. OMNI book, 85 stamps, U, CV \$98+	9
92	Ireland. Ret. OMNI book, 76 stamps, U, CV \$68	6
93	Italy. #26 (1863) slate green, F, NG, few sm. Faults, CV \$1000	80
94	Italy/Vatican City. Mostly complete sets, M, 1960s, @120 stamps, CV \$39+	8
95	Liechtenstein. #8, MLH, VF-XF, CV \$55	11
96	Liechtenstein. #80, LC BR (CTO?), nicely centered, CV \$65	15
97	Liechtenstein. #710, MNH, SS, 75th Birth. Prince Franz Joseph, CV \$2.50	1.25
98	Malta. #21, 49, 50, 53 (all 4 MNH), 68, 69, 115 (all MH) CV \$25+	
99	Mauritania. In binder, mostly M, collection/stock #1/330, many dupes CV \$545	125
100	Mauritania. In binder, mostly M, BOB, airs, semis, etc., many dupes, CV \$120	40
101	Mexico. #1306a, M, vert. strip of 1303-1306 w/ label, CV \$15	5
102	Mexico. #C220Hi, U, Perf 11 1/2 X 11, LL corner gone, CV \$40	4
103	Natal. #16, 36, U, both G, perfs cut at r., rough perfs on 36. 16 is space filler, CV \$65	21
104	New Hebrides. #132 (Br.), 151 (Fr.), 2 sheets of 9, Tree Industry, CV \$6.25	2.50
105	New Zealand. Stock book, M & U, #286/413, many dupes, better: 296-8, 298A, 315, 325, 351, 353, 356-7, 360, gutter pairs, CV \$470	100
106	Norway. #20, U, F, perfs touch bottom frame, CV \$50	12
107	Norway. #21, U, clear cancel, VF, CV \$45	10
108	Panama. #219, MNH, toned, upper left perf missing, CV \$40	
109	Panama. #379 Error, VF, MNH, CV \$12.50	7
110	Romania. 140 stamps, MH & MNH, 1931-1955, Gibbons CV \$240+	45
111	Russia. 1950s stamps, M & U, some better, on pages, 227+ stamps, CV \$146+	28
112	St. Vincent/Grenadines. 103 M & U, some on paper, incl. #504-507, 483-494, sheet of 12 (specimen overprint) + 5 singles w/ovpt., CV \$34	9
113	Solomon Islands. #570-4, MNH, sheet of 50 stamps, America's Cup, CV \$22.50	11
114	South America. 812 stamps, few dupes, Peru (338), Mexico (311), Paraguay (117), mostly U, to 1950s, plus 45 diff 1965 military uniform seals (Mexico), some on Scott Specialty pages in Specialty binder, others on stock sheets, CV \$203+	20
115	Switzerland. #206, MH, large margins, CV \$110	50
116	Switzerland. #656, MNH, sheet of 8, Lemanex '78, CV \$7	3
117	Switzerland. #708-709, MNH, sheet of 10 + labels, Gothard RR, CV \$9	3.50
118	Switzerland. #B541, MNH, sheet of 8, Pro Aero Foundation, CV \$20	6
119	Switzerland. Ret. sales books, 400 stamps, M & U, early to BOB, CV \$1000+	130

Lot #	Description	Minimum Bid
120	<b>Thailand.</b> Ret. OMNI book, mostly U, 50 stamps, CV \$19	2
121	<b>Turkey.</b> M sets & blks of 4, incl. #B150 blk of 6, sheet of 25 #1798 (folded), CV \$30	7
122	<b>Venezuela.</b> 150 M & U, #124/735, some dupes, values .50 to \$12, in 6 stock sheets, 2002 CV \$210	20
123	<b>Yugoslavia, Zambia, Zimbabwe.</b> Ret. OMNI book, M & U, 167 total, CV \$58+	5
124	<b>Worldwide.</b> British Omnibus. 1935 Jubilees, 5 complete sets: Bermuda, Leeward, St. Lucia (MH). Grenada, Trinidad are U. CV \$29+	18
125	<b>Worldwide.</b> Ret. OMNI book, misc. countries, U, 100+ stamps, CV \$28+	
126	<b>Worldwide.</b> 90 stamps, M & U, w/cv .50-\$1, mostly large, CV 60	6
127	<b>Scott Classic Catalog.</b> 2006, Hardbound, color. Nice condition! Gently used. New Price \$125 No Minimum Bid! HBO	
128	<b>Stock Books.</b> (3), one small, 2 medium, good condition!	

END OF AUCTION

PROCEEDS FROM DONATED AUCTION LOTS HELPS TO SUPPORT THE ISWSC.

## Semi Crazy

Continued from page 1



Figure 5—Berlin, Scott 9NB3a.

majority being found in Berlin (Figure 5).

Other types of semipostals that might be overlooked are (with *Scott Catalog* prefix's in quotes): Military Semipostals "MB" (Figure 6); Postal Tax Semipostals "RAB" (Figure 7); Special Delivery



Figure 7—Brazil, Scott RAB1.

Semipostal "EB" (Figure 8); and Semipostals used by Governments in Exile "KB" (Figure 9).

Of course, there is a philatelic world beyond the ever helpful *Scott Catalog*. You will also find semipostals on postal stationary and stamps issued by local governments. The possibilities for building a



Figure 6—Austria, Scott MB2.



Figure 8—San Marino, Scott EB1.

semipostal collection are limitless. The variety of postal usages of semipostals is only one of the many reasons I am semi crazy.

I would like to hear from anyone who is aware of any other type of semipostals that I have yet to discover. My e-mail is [lestamps@charter.net](mailto:lestamps@charter.net).

In my next article, I will turn my attention to the types of charities and causes that semipostal stamps have supported. You may be surprised!



Figure 9—Poland, Scott 3KB1.

# Board of Directors Meets

**T**he ISWSC board met throughout the month of January via e-mail. The following items were discussed:

**Finances:** As of January, we have \$10,920 in the bank. Our bank balance is gradually declining as the cost of mailing *The Circuit* is a little more than our total dues income. We get income from the Auction but have not had one in some time. We discussed giving members the option of e-mail delivery of *The Circuit* and will explore this further. Also to be looked into are options such as paper quality and mailing without an envelope.

**Membership:** We currently have about 356 members. We have had a significant drop off in foreign members. Many foreign members are probably dealers and join once to get the mailing list, then never renew. We have had problems with dues paid in stamps of the members country and have decided that dues either need to be paid through Paypal or in US full gum postage or cash. No member will receive a membership packet with our directory until dues are paid in full.

**Website:** We will begin a complete review of the website to make corrections and be sure there is current and updated information. Link policy was discussed. Members who are dealers may have a link to their site, but non-member dealers may not.

**Membership:** Jeff Schumer has agreed to take on the Membership director position. We continue to look at various options for increasing membership. As always, direct personal contact is the best source of new members. We also get members via the Internet and our website.

## ADVERTISING

### Classified Rates per Insertion

First 30 words, including name, address, and ZIP Code are \$3. Additional words are 20 for \$1. NOTE: *State abbreviations = one word; "P.O. Box 1234" = two words; ZIP Code = one word.* Make all checks payable to "ISWSC" in U.S. funds. Send text and payment for advertisements to the Editor (see page 2).

ONLINE PUBLICATIONS! Mekeel's & Stamps Online weekly, just \$10 for 26 weeks; U.S. Stamp News Online monthly, just \$6 for six months! Both publications just \$14. Stamp News Publishing, 42 Sentry Way, Merrimack, NH 03054, 800-635-3351, StampNewsNow@verizon.net. To see samples & sign up: [www.StampNewsNow.com](http://www.StampNewsNow.com) [5-6/08]

MALTA 120 DIFFERENT used stamps in good condition. Sets and many high values. US \$12 cash postpaid. Mr. Joseph Farrugia (ISWSC #690), "Biancaville", Philip Farrugia Street, Zurrieq ZRQ 05—MALTA [5-6/08]

BREAKING UP 60-YEAR ACCUMULATION. Let me send you a stuffed envelope of old, new, mint and used, etc. Pick what you want at 1/3 SCV and return the balance. Gelfman (ISWSC #1849), Box 315, Old Bethpage, NY 11804—USA. [9-10/08]

LIKE TO TRADE for or possibly buy US Match & Medicine revenue stamps. Gerry Harvey (#2542), e-mail: [gharvey4orama621@gmail.com](mailto:gharvey4orama621@gmail.com). Tel: 386-672-5788 [5-6/08]

PLEASE GO TO YAHOO SEARCH and enter "Gerry Harvey Stamp Trading". You will see my website listing what I have for trade. Gerry Harvey, member #2542 [5-6/08]

YOUR CLASSIFIED AD helps support the ISWSC. Place your ad for the next issue today!

## Call for Nominations

**N**ominations are now being sought for ISWSC members willing to serve on the Board of Directors as Vice President or as a Director At-Large. The Board conducts its business via e-mail, meeting approximately four times per year.

The duties of the Vice President are to assume responsibilities as assigned by the President or Board of Directors. The Vice President, in the absence or inability of the President, serves as President. The initial term of

office will be one year (2009).

Candidates for two Director At-Large positions are also needed. Directors At-Large work on special projects as assigned by the Board and provide general input and counsel. The term of office is two years (2009-2010).

To get additional information, express interest in a position, or to nominate a fellow ISWSC member, please contact ISWSC President, Joanne Berkowitz.

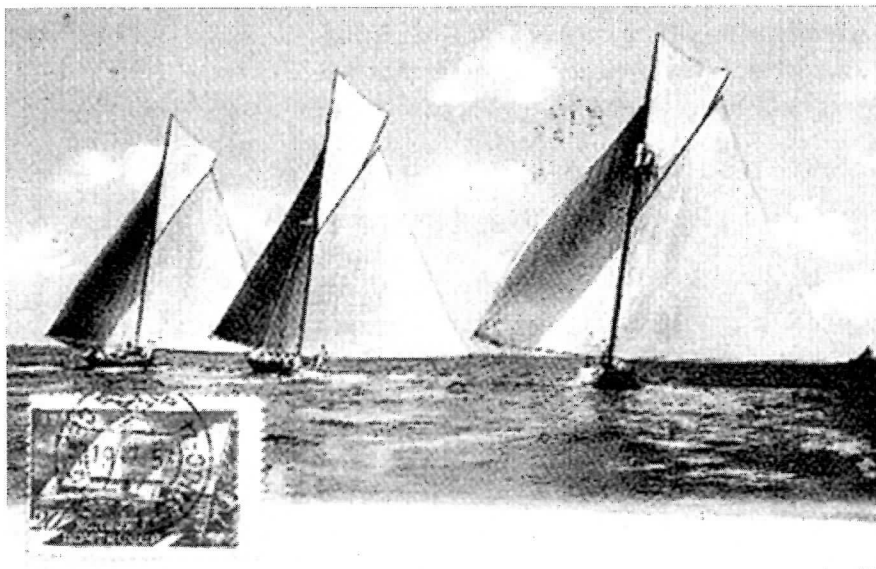


# We're Shipping Out . . .

great stamps from around the world  
each and every month!

## Nutmeg Stamp Sales

makes  
it  
easier  
to find  
just what  
you want  
in our  
full-color  
catalogs.



That's the first  
reason to check us out.

The second is the two (count'em TWO) sales  
a month.

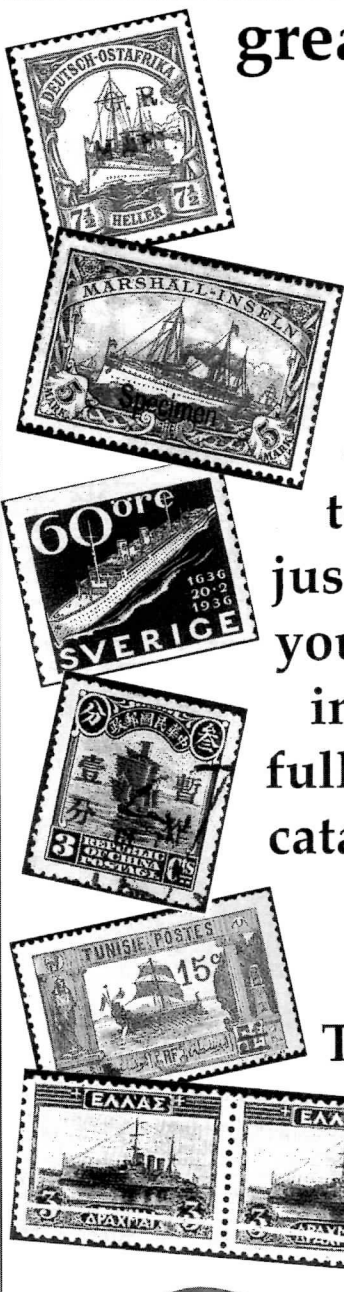
*Be sure to get on board!*

View lots online at

[www.nutmegstamp.com](http://www.nutmegstamp.com)

Get a free catalog by calling

**1-800-522-1607**



• P.O. Box 4547 Danbury CT 06813 • Fax: 203-798-7902  
• Email: [info@nutmegstamp.com](mailto:info@nutmegstamp.com)

# Whatzit? Blue Stamps

by Richard Barnes (#2425)  
Whatzit? Coordinator

I must apologize to anyone that tried to e-mail me with answers to the past two Whatzit columns or wanted to get an item into the column. I made arrangements get a faster Internet provider. What I did not know was that I could not preorder my new e-mail address. The change took



Figure 1—Iran

it to me again at my new address.

The 10 countries that form the Economic Cooperation Organization of Postal Authorities had a major meeting in September 2006. Many countries issued a stamp to commemorate this meeting. I have the Iranian stamp (Figure 1), printed in 2006 sitting in its appropriate album.

Pakistan, on the other hand, issued their stamp on the first anniversary of this meeting, September 22, 2007 (Figure 2). Immediately noticeable is that the design of the Pakistan stamp had been plagiarized from the Iranian stamp. The issuing country name, Pakistan, is not found on this stamp, while the name Islamic Republic of Iran is on the upper-left of the stamp. The Pakistan currency of Rs 10 is found on the right side of the stamp, but the Iranian currency of 650 Rial is also found on the upper-left of the stamp. The text is in Persian and English, but not in the expected Urdu language. It is not surprising this stamp was "immediately" withdrawn.

I have not seen any information of this Pakistani stamp in the philatelic press. The editors of the Scott catalogues will ignore this stamp, as it probably does not fall within their criteria or interest. Without a dealer aware of my collecting interests, I would not know about this stamp. I subscribe to a couple of philatelic services provided by state post offices. When there is a

place the same time the last column went to the printers. Please check the address block at the end of this column for my current e-mail and postal addresses. If you do not see your information in this column, please send



Figure 2—Pakistan

hiccup (such as happened with this stamp), my past experience is that the stamp is not sent out to the small collectors. Without a stamp dealer, I would not have a source to purchase this stamp. Having a relationship with a good stamp dealer who knows my collecting



Figure 3

interests is a big help when it comes to enhancing my collection and adding another conversation point in my albums.

Figure 4 (Jan/Feb issue) is confirmed to be an India "revenue" stamp. A translation of the large print reads "Employees (or Workers) State Insurance Corporation". It is more a proof of dues/fees/contribution paid than a revenue. It is an official Indian Government stamp. For years, the Indian Government handled all life insurance policy issuance, now, as the economy matures, it appears the GOI is overseeing other types of insurance as well. It is difficult to place it in a timeframe, as the 5.25 Rupees is an odd amount. This is indeed Hindi – the bottom word translates into the English word "corporation", from the phonetic Devanagari Sanskrit script which Hindi uses.



Figure 4

The first Whatzit in this issue is a block of four stamps (Figure 3). These purple/blue stamps were issued in combination with the 1900 Paris Exposition.

Continued on page 13

# Where the Heck is Buryatia?

by William Silvester (#1058)

With the breakup of the Soviet Union in 1990, a number of autonomous republics came into being. Some of these became independent, others stayed under the control of Russia. One of these was Buryatia, also spelled Buriatia, a 350,000 square kilometer state located along the eastern shore of Lake Baikal in the south-central region of Siberia.

The mountainous terrain, which includes the Baikal Mountains, is the home of some one million people — mostly ethnic Russians and Buryats. Buryatia is



bounded on the north and west by Irkutsk Oblast, on the south by Outer Mongolia and on the east by Chita Oblat. The state is thickly forested and also contains vast tracts of grazing land. The capital is at Ulan-Ude.

The area that is now known as Buryatia was colonized by the Russians in the 1600s as they sought wealth in fur and gold. The culture of the people was closely related to

that of the Mongols and after they were incorporated into the Russian Empire, the Buryats west of Lake Baikal became more 'Russianized' and took to agriculture (rather than their nomadic ways) and adopted Christianity. The eastern Buryats remained nomadic and adopted Buddhism. By 1741 the Tibetan branch of Buddhism was one of the official religions of Russia and the Buryats built the first monastery.

Following the Russian Revolution, in 1923 the area became known as the Buryat-Mongolian Autonomous Soviet Socialist Republic as Buryat-Mongol and Mongol-Buryat Oblast were united as one republic. Two areas, Aga Buryatia and Ust-Orda Buryatia were detached in 1937 (in an effort by Stalin to disperse the ethnic Buryats) and merged with Chita and Irkutsk. Later, the Olkhon district was transferred to Irkutsk as well. Fearing a rise in Buryat nationalism, Stalin ordered 10,000 Buryats killed.

The 'Mongolian' part of the republic's name was

removed in 1958.

With the dissolution of the Soviet Union in 1990, Buryat ASSR declared its sovereignty and adopted the name Republic of Buryatia in 1992. Despite this, Buryatia remained an autonomous republic within the Russian Federation. In 1994 a



People's Constitution was adopted and a bilateral treaty signed with the Russian Federation the following year. The President of Russia appoints the President of Buryatia to a four year term.

The Republic of Buryatia uses the postage stamps of the Russian Federation. The stamps pictured here and any others with the name Buriatia or Buryatia are illegally produced and should be considered labels or cinderellas, not postage stamps.

## Membership: A Great Value

by Jeff Schumer (#2101)  
Director of Membership

Those of you reading this almost certainly appreciate the many advantages of membership in the ISWSC - the articles in *The Circuit*, opportunities to buy or trade worldwide stamps, stamp identification help, and more.

Do you realize that membership in the ISWSC costs about 4¢ per day? I'm sure that prospective members may ask themselves, "How good could a society be, charging only 4¢ a day?"

If you recognize the value of our group, then I only ask that you not keep us a secret! Other than using your "powers of persuasion" to influence your collector friends, note that our website has promotional flyers that can be copied and given or mailed.

If you have membership questions or ideas, please contact me at [jschumer@comcast.net](mailto:jschumer@comcast.net).



## Membership Update

### New Members

- 2564 **Hossein Kalantar** (exp. 01/31/09)  
PO Box 13185-1683  
Tehran—IRAN  
tambrhk@yahoo.com; A, C, 7, US, Belgium,  
Europa, England
- 2566 **Daniel Guerrero** (exp. 01/31/09)  
Quirno 1020  
Capital Federal  
BS. AS. 1406—ARGENTINA  
daniel\_guerrero@ciudadsd.com.ar; A, DD, 6,  
flora/fauna
- 2567 **Wendy Larsen** (exp. 02/28/09)  
1530 N 130th Road  
Lincoln, KS 67455-8980—USA  
wendyllynlnarsen@yahoo.com; A, G, Int(28),  
CC, chickens, human rights, law
- 2568 **Jeff Schumacher** (exp. 03/31/11)  
1030 First St.  
Brookings, SD 57006-2219—USA  
moth2a@yahoo.com; B(1850-1975), G, Int(10),  
EE, French colonies, Italian colonies, Poland,  
Ethiopia
- 2569 **Gerhard Lorenzen** (exp. 03/31/09)  
4262 Blackton Dr.  
La Mesa, CA 91941-7511—USA  
A, D, Adv(75), EE, 5, used blocks
- 2570 **Heinrich Scharhag** (exp. 03/31/09)  
Hauptstrasse 31  
Walluf 65396—GERMANY  
A, E, Adv(45), DD, used Central and South  
America
- 2571 **Rob Roy Hathaway** (exp. 03/31/11)  
2011 Melissa Diane St.  
Mansfield, TX 76063-5151—USA  
r\_hathaway@charter.net; A, F, Int(42), DD,  
COROS, Popes and Saints, Scouts
- 2572 **Bob Edwards** (exp. 04/30/09)  
21553 Augusta Ave  
Port Charlotte, FL 33952-5421—USA  
Cdc99carmen@yahoo.com; F, Adv(12), DD, 4,  
5, 8, Disney, Space
- 2573 **Skawomir Pilarski** (exp. 04/30/09)  
Staszica 22/76  
Kutno 99-300—POLAND  
A, E, F, Adv(45), EE, Sport, Chess

### Resigned

- 2535 **Scroggie**

### E-mail Changes/Corrections

- 2215 **Rizzo** poly76ce@gmail.com  
2425 **Barnes** rtbarnes@shaw.ca

## Whatzit?

Continued from page 11

For what countries were such stamps issued? Was there more than one color used for these stamps? How were



Figure 5

they used (e.g. advertising, souvenir, etc.)? Figure 4 is another blue stamp. It has a Bulkans feel to it. Information concerning who, when, why and if it's a set is needed for this struggling crowned lion. The final Whatzit is another blue stamp (Figure 5). This pastoral scene has an Eastern European look to it. What country is this stamp from, what is its

purpose, and do any more stamps make up a set?

If you have any suggestions for topics or have any unknown stamps you want members to identify, please let me know. I always want to make the Whatzit column more interesting to readers.

\*\*\*\*\*

Richard T. Barnes  
11715 - 123rd St NW  
Edmonton, AB T5M 0G8  
CANADA  
rtbarnes@shaw.ca

## Swap Circuit Update

Welcome to those recently joining the Swap Circuit program! Your fees are being processed (along with those renewing participation in the program) and you'll soon be receiving your first circuits! Happy Stamping!

## Ventures in Printing:

# Entirely Recess-Printed CMP Stamps

by Sandy Stover (#2325)

*Editor's Note: This is the fourth article in a series, adapted from a book on classic multicolored postage stamps currently being written by the author.*

The previous article discussed entirely recess-printed CMP (classic multicolored postage) stamps of Austria and Iran, all five of which were printed by the Austrian Government Printing Office in Vienna. Only two additional recess-printed CMP stamps were issued prior to World War I:

- Chile, Scott 78: *Columbus*; 1p; 1905; gold, green, gray (Figure 1)
- Barbados, Scott 109: *The "Olive Blossom"* (next article)

[Note: Throughout these articles, I use the term "recess" as equivalent to intaglio, although this is technically imprecise. Strictly speaking, recess printing includes both intaglio and photogravure, but the latter is treated in these articles as a separate method.]

*Chile Scott 78: Verging on Bi-Color*

The Chilean stamp was printed by the American Bank Note Company (ABNC) using steel plates (Haworth, pp. 63-64) and almost certainly, therefore, according to the *mechanical transfer* method of plate production (see below). A portrait of Christopher Columbus and based on the \$5 stamp of the United States Columbian Expedition Issue of 1893, it is a fascinating stamp precisely because it is not *obviously* multicolored, yet it is *richly* multicolored. Please bear with me as I lay some background.

As was noted several articles ago, the famous English philatelist, Robson Lowe, in a thin volume on philatelic aesthetics, boldly set down the following dictum: "The colour of any single stamp must be pleasing in itself and one stamp should not have more than two colours" (Lowe, pp. 7-8). (I cannot help noticing that he announced this in 1943—the same year that the United States issued its first multicolored postage stamps.) Lowe's aesthetic boldness also took aim at certain printers—especially those who defied his two-color rule or engaged in "metallic printing". The

Netherlands printer, Enchedé and Sons, who became successor to Vienna in printing stamps for Iran, drew the following blistering comments: "Believing that they [Enchedé and Sons] held 'the gorgeous East in fee' they indulged not only in gaudy polychromy but also in metallic printing, achieving thereby a vulgarity which it is not easy to parallel" (Lowe, p. 90).

Other printers received Lowe's scorn, although for less specific reasons:

... [The American Banknote Company] began to make stamps in 1879 for the United States Government and until 1893 it printed stamps which were obviously inferior to previous American issues. Later printing was done by the Government Bureau of Engraving and Printing but that institution inherited the style and manner of the A.B.C., retaining them to this day. Therefore they are classed together.

Moreover, the A.B.C. still continued to function, printing for numerous American Republics and even, in 1920, for Belgium. It has Canadian and South American branches. The style of A.B.C. is characteristic, monotonous and tasteless; ugly frames are one of its consistent and principal faults. Once seen, unfortunately, never forgotten (Lowe, pp. 91-92).

I will return to the philatelic-aesthetic ideas of Lowe in future articles, especially because they are perhaps less preposterously simplistic than they may at first sound; but for now it is enough simply to note that this Chilean CMP stamp has three "Lowean" strikes against it: It is multicolored, it includes metallic ink, and it was printed by the ABNC. But as he was quite able to do, Lowe would no doubt have made an exception in this stamp's particular case, there certainly being nothing "vulgar", "gaudy", "monotonous", "tasteless" or "ugly" that would strike the mind of most collectors.



Figure 1—Chile (Scott 78), Christopher Columbus.

**SHARE THE JOY—INTRODUCE  
SOMEONE TO STAMP COLLECTING**



Quite the opposite: The Chilean stamp's gradually variant tones of gold, muted green and gray are so contrast-subdued that, at first glance, the stamp passes as a bi-colored green and gray. Indeed, there is some reason to wonder, based on his 1919 text, whether Haworth himself recognized all three colors. Furthermore, when I consult the on-line (abbreviated) Stanley Gibbons catalogue ([www.stanleygibbons.com](http://www.stanleygibbons.com)), I am told that the stamp is "grey and green". And to top it off, upon viewing the stamp (in a rare moment of paying any attention whatsoever to stamp collecting), *my own wife* thought it was just two colors!

But while it may be a *near bi-color* (a not uncommon occurrence among CMP stamps), I would maintain that the Chilean stamp has a beauty of color design that is owing to the subtle presence of the gold. I would also venture to say that, in this and several other cases of multicolor stamp design, the viewer does not need to recognize all of the colors in order to appreciate all of them.

#### *Recess Plate Production by the Mechanical Transfer Method*

The previous article reviewed the arduous pre-1940 method of *electrolytic* plate production—the method probably used for the Iranian and Austrian stamps. Here it seems appropriate to review the equally complicated *mechanical transfer* method that was used for the Chilean stamp. Fortunately, Williams and Williams have already provided a very succinct summary:

Softening a small block of steel—the "die."

Engraving the design in recess on the die.

Hardening the recess-engraved die.

Softening a mill or roll (a small cylinder) of steel.

"Taking up" the design on to the periphery of the roll by pressing the soft roll into contact with the hardened die under great pressure and with a rocking motion, forcing the metal of the roll into the recesses of the die, and resulting in a "relief" of the design on the periphery of the roll.

Hardening the roll—with its relief termed the "roller die."

Softening a comparatively large sheet of steel—the "plate."

"Laying down" or "rolling in" the design on the plate (in as many different positions as required) [for as many subjects as required] by pressing the relief on the hardened roll into contact with the softened plate under

great pressure and with a rocking motion, forcing away the metal of the plate and resulting in recesses on it corresponding with the relief of the roller die and the recesses of the die.

Printing from the plate.

(Williams/Williams, pp. 158-199).

Again, one is struck by the *pre-printing* complications and attendant risks, particularly when considering that multicolor required equally multiple plates.

#### *References*

Gibbons, Stanley. Search Catalogue. [www.stanleygibbons.com](http://www.stanleygibbons.com).

Haworth, Wilfrid B. (1919). *Chile: An Outline of the Postal Issues, 1766-1919*. London: Office of "Stamp Collecting".

Lowe, Robson (1943). *Masterpieces of Engraving on Postage Stamps, 1840-1940*. London: Postal History Society.

Scott 2005 Classic Specialized Catalogue of Stamps and Covers, 1940-1940. Sidney, OH: Scott Publishing Company.

Stover, Sandy (2008). *An Inventory of Classic Multicolored Postage Stamps* (unpublished).

Williams, L. N., and M. Williams (1971). *Fundamentals of Philately*. State College, PA: The American Philatelic Society.

## OMNI Improved, Reorganized!

by David Paul (#59)  
OMNI Exchange Manager

**I** recently completed the annual audit of the OMNI Exchange with the help of co-managers Dale Harris (#2311) and Roger Kraus (#2462). The exchange is once again running smoothly and offers nearly 1,200 books of entries by members to choose from. The value of individual books ranges from \$30 to \$250, so we have all types of stamps from various countries and collecting periods.

In spite of the disruptions caused by manager turnover last year, members traded \$18,000

Continued on page 16

# President's Message: Health & Hobbies

by Joanne Berkowitz (#98)  
ISWSC President

**T**wo members of our local club died recently. Neither was really old. One man died of cancer and the other—diabetic, hypertensive and obese—died after heart bypass surgery. It got me thinking about hobbies and health.

According to Dr. Peter Lichtenberg of the Institute of Gerontology at Wayne State University, people who have a hobby are generally healthier. Mental activity is known to stave off dementias such as Alzheimer's Disease. Hobbies also keep us connected with other people of similar interests and human contact keeps us going. Hobbies reduce stress and give us a purpose.

All of this was evident as I watched the members of our club at this week's meeting. At least 30 people were

busy looking for stamps in the club circuit, sifting through the 2¢ boxes, admiring collections that other members brought to share and just socializing.

One of the advantages of philately is that you don't need to be in great physical condition and as your body slows down with age, if anything, it gives you more time for stamps. But I am going to put in a plea for everyone to pay a bit more attention to their physical health and get some exercise as well. I look around my club and at stamp shows and see numerous people in poor shape. Ill health and death take a lot of ISWSC members as well.

So, one out of one doctors recommend that you remember to get up and stretch regularly, go for a walk, lift weights, quit smoking and eat healthy so that you can enjoy this hobby for as long as possible.

## Stamp Outreach Update

by Richard Rizzo (#2215)  
Director of Stamp Outreach

**I** just finished going over our records and wanted to give you a quick update on our Stamp Outreach Program. In 2007, we sent out 1,041 packets of stamps to 270 individuals and 37 youth stamp clubs and schools. It is nice to know that Boy Scouts and Girl Scouts can still earn a "stamp collecting" merit badge because of the 37 groups that were sent stamps, 11 were Boy Scout and/or Girl Scout troops.

Thanks to the generosity of our members, we are getting many involved in our great hobby that might otherwise not have gotten involved. Here are just two examples of the many thank you notes the ISWSC receives for your donations of stamps:

*Thank you very much for the stamps. Eight of our Scouts earned the stamp collecting merit badge.*

**Ken Zatyko, BSA Troop 755, Gambrills, MD**

*The package of stamps arrived today and they were amazing. Thank you for helping the children of our deployed Illinois soldiers.*

**Patricia Mills, Camp Lincoln, Springfield, IL**

Also, in case you haven't noticed, we changed our name from the "Youth Stamp Program" to the "Stamp Outreach Program". This is because we offer our free packet of stamps not only to the young, but also to new collectors of all ages. So if you know of anyone out there who wants to start the great hobby of stamp collecting, have them drop me a line or an e-mail (see page 2 for contact information).

## OMNI

Continued from page 15

worth of their duplicates to other members and got stamps for their collections in exchange. There are approximately 60 active OMNI members (with some, like me, being members from the beginning) and their total trades amounted to \$187,000. About 200 new books are entered each year, so there are always lots of new stamps to look at.

In addition to the ten page books offered by OMNI (which some collectors see as a daunting task to fill), we now offer five page books.

If any ISWSC member is thinking of giving the exchange a try, I hope you'll contact me (see page 2) for more information and an application form. It's as simple as giving us your name and address and a summary of your collecting interests. We've probably got some stamps in our files that you need in your collection, so put your duplicates to good use and sign up!